

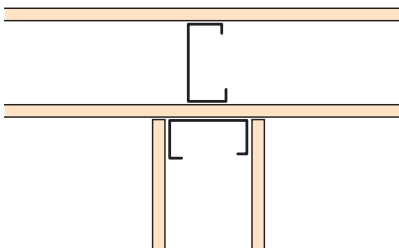
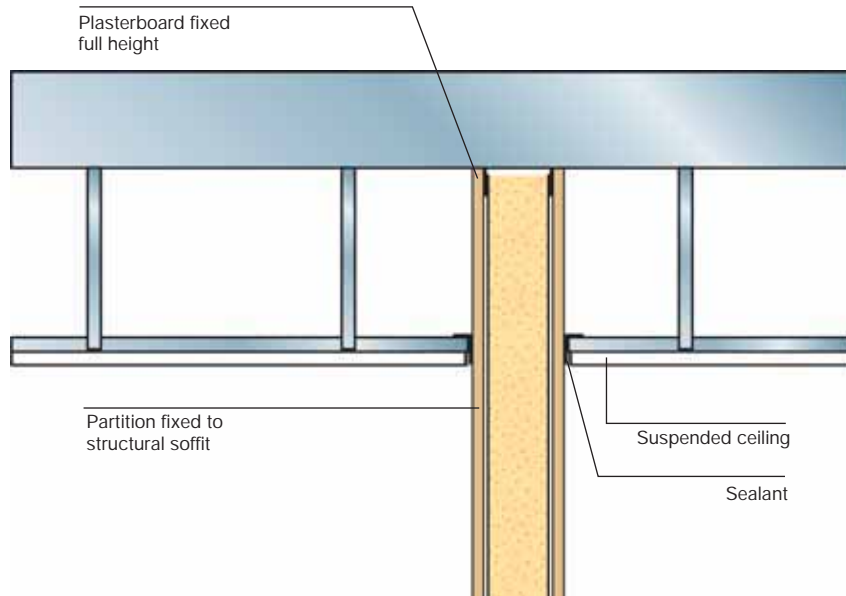
Best Practice NEW

Suspended Ceiling and Corner Detailing

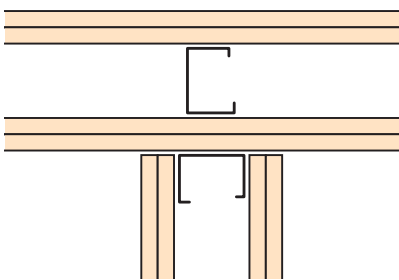


Partition interface with suspended ceiling

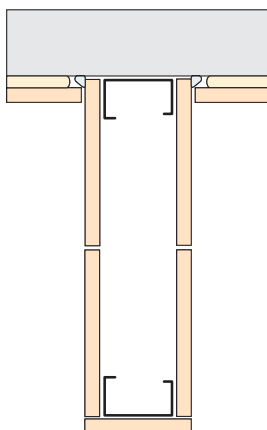
Partitions should be built between structural building elements in order to achieve their maximum height, fire and acoustic performance. The suspended ceiling can then be installed abutting the partition (the same principle applies with ceiling linings on resilient bars). This prevents issues with fire or sound bypassing the partition through the suspended ceiling cavity.



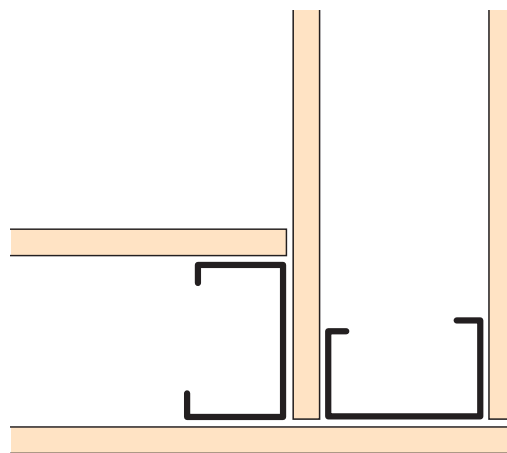
T Junction-single layer



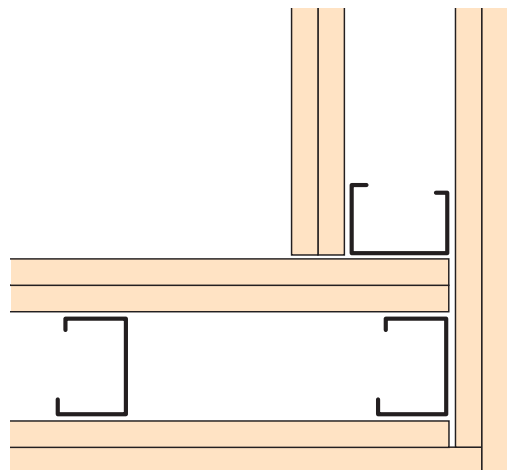
T Junction-double layer



Wall Junction-stud to wall



Corner detail-single layer



Corner detail-double layer